

1. Administrator's Guide .....	2
1.1 Workspaces and User Administration .....	2
1.2 Controlling Database Size .....	2
1.3 Configuring User Rights .....	3
1.4 Security .....	5

# Administrator's Guide

## Content

- Workspaces and User Administration
- Controlling Database Size
- Configuring User Rights
- Security

## Download



You can download this documentation in pdf format.

## Workspaces and User Administration

In **arKitect**, projects are located in workspaces. Workspaces resemble folders containing projects. To learn more about workspaces, see [Workspaces](#). To create, rename or delete a workspace, you can use the **Workspaces Administration** page.

The **Workspaces Administration** page is located on the identification server at [http://SERVER\\_NAME/WAM/](http://SERVER_NAME/WAM/). For accounts hosted by **Knownledge Inside**, the address is <http://arkitect.k-inside.com/WAM/>. A login and a password are required to access the page.

From this page, you can also administrate the **arKitect** users. This means that you can:

- Add a new user
- Remove a user
- Set a user as **Developer** or **Designer**
- Change the user details (mail, password, etc.)
- Define what workspaces a given user can access
- Create new workspaces and rename existing ones

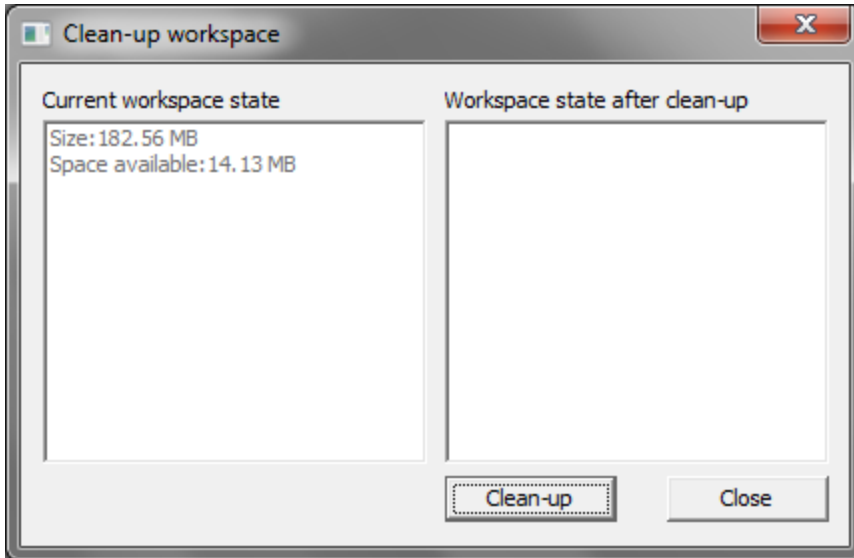


If you do not have an **arKitect Administrator** for your project, you must use [arKitect support](#) as your Workspace and User Administrator. You can address your requests to the **arKitect** support. However, only the person designated as responsible for administration in the license agreement can demand modifications on **arKitect** users and workspaces.

## Controlling Database Size

Currently, **arKitect** uses Microsoft SQL Server Express Edition to store information in databases. Its limit is 4 Gb per database. When the database size becomes greater than 3.5 Gb, a warning window appears when a user tries to open the workspace in question.

If the user is an **arKitect Administrator**, this window will contain information about what should be done to prevent database growth. Cleaning up databases can prove useful. This tool can be found by Administrator users in **Administration Clean-up Workspace....**



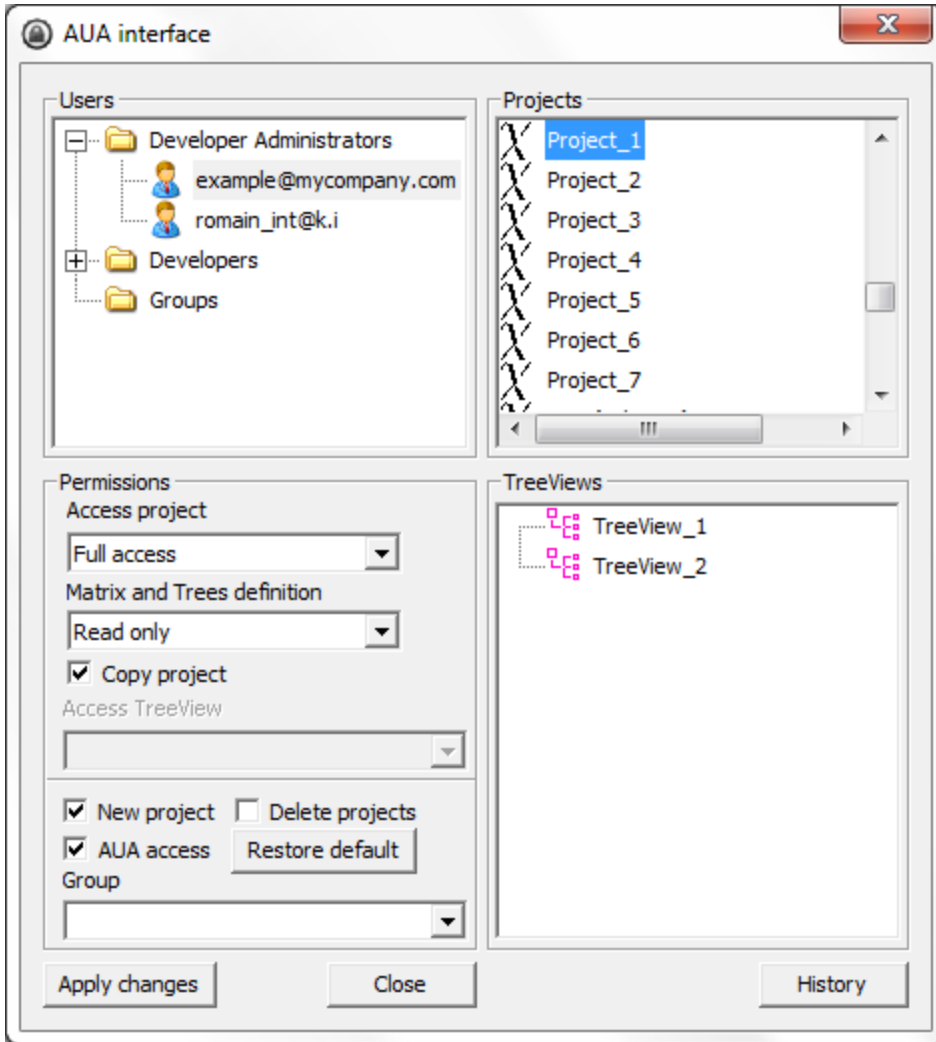
If the user does not have Administrator rights, a message containing information on the database will be send by e-mail to all Administrators of the workspace.

## Configuring User Rights

User rights can be configured through the **AUA** or **arKitect** User Administration interface. It is available to

- **Designers** (always)
- **Developer Administrators** (by default, can be changed by a Designer)
- **Developers** (not available by default, can be changed by a Designer or a Developer Administrator)

To open the **AUA** interface window, go to **Data and User Administration** Category -> **Administration** Panel and select **User Rights Administration** (see [Administration Panel in the Data and User Administration Category](#)).



- In this dialog window, it is possible to change the rights of users for any project that exists in the workspace.
- It is also possible to change the rights for any projection that exists in the chosen project.
- **Restore default** button restores the default rights of a chosen user.
- Choose a group to change group rights in the same manner as user rights.
- It is possible to place a user in a group. In this case, the user will have the rights of the chosen group.
- Right-click on a **Groups** item to add a new group.
- Right-click on any group to rename or delete it.
- All changes will be saved only if you press the **Apply changes** button.
- Press the **History** button to see all the changes in the rights.

Here you can see a list of users rights for different items (the first row represents default rights and the second row the changes that can be made):

License	AUA	New Project	Delete Project	Copy project	Rules/Filters bar	Projections	Modify objects
Designer	2	2	2	2	2	1	2
	2	2	2	2	2	1	2
Developer Administrator	2	2	2	2	0	1	2
	0,2	0,2	0,2	0,2	0	0,1	0,1,2
Developer	0	0	0	2	0	1	2
	0,2	0,2	0,2	0,2	0	0,1	0,1,2

Read-only user	0	0	0	0	0	1	0
	0	0	0	0	0	1	0
Full access	2						
Read only	1						
Not accessible	0						
Can be changed	0,1,2 (0,2)						

## Security

**arKitect** use a secured HTTPS connection. It protects user privacy and sensitive information such as logins, passwords and data. On the server side, the database is closed to any external connections, and modifications are only possible through our own protocol.